



HAVAL H6 GT





Style with speed - advanced design driven efficiency



EXPERIENCE THE BEST

The Haval H6 **GT** has been reimagined, with its coupé-inspired design moving into a standout space of SUV refinement, guaranteed to spark envy wherever you go. The unique features like **Aero Side Skirts**, an expansive cabin and **Semi-Autonomous Driving** capability remain, but there's also a refreshed look with sleek and sporty seats. On the technology front the iconic **GT** now also features **Intelligent Voice Command** for complete control.

The Haval H6 **GT**, transformed into our most dynamic SUV.



P e r f o r m a n c e r e a d y 1 5 5 k W 3 2 5 N m

Power Packed

The **2.0 L Turbo engine** and **7-speed DCT** deliver an impressive **155 kW and 325 Nm** of torque, clear proof that there's plenty of power to match the **GT**'s slick and athletic style.

Shift The Sport

Exclusively on the Haval H6 **GT**, **Race Mode** shifts driving into high gear! Feel the thrill with a unique sport exhaust tone and sharper throttle and transmission response—every drive is an exhilarating experience.

Agility Through Precision

The Haval H6 **GT** combines **Macpherson Suspension** in front and **Multi-link Independent Suspension** at the rear, enhancing the vehicle's articulation and ease.



A person wearing a blue long-sleeved shirt and jeans is partially visible on the left side of the frame, standing next to a building. The building features a large glass facade that reflects the surrounding environment. A glowing neon sign in a bright orange-yellow color is mounted on the building, displaying the words "PURE ENVY" in a stylized, outlined font. The sign is set against a dark, rectangular background. The overall scene is dimly lit, suggesting it might be dusk or night.

PURE ENVY

ATHLETIC AESTHETIC

A racy, streamlined body with **Black Accented Wheel Arch Cladding** and **Carbon Fibre Inserts** allows the design to take centre stage. **Roof and Lip Spoilers** enhance the fastback rear, creating a dangerously enviable look that commands attention every time it hits the road.





Vision Beyond Limits

Light the way ahead with the Haval H6 **GT's** **Electric, Height-Adjustable LED Headlights** and Daytime-Running Lamps for superior visibility.

If Looks Could Thrill

A stylish **Synthetic Leather Steering Wheel** complemented by sporty trim detail elevates the ambience of the beautifully crafted interior.

Eye-Catching

Featuring an **Aerodynamic Kit with Dual Rear Spoilers, Aero Side Skirts, and a Sporty Rear Diffuser**, the design embodies a bold, athletic look, underlining the Haval H6 **GT's** distinctive style.



Wherever the road takes you, the GT's got comfort covered



COMFORT IN MOTION

Automatic Dual Zone Aircon, Heated Front Seats and a 6-way Electric Adjustable Driver's Seat ensure total peace-of-mind on all adventures.



A photograph of a modern building at night. The building has a dark, angular roof and a facade of vertical wooden slats. A large, glowing neon sign in the shape of the words "PURE ENVY" is mounted on the wall. The sign is made of yellow-orange neon tubing. To the left of the sign, there is a small potted plant in a dark pot. The ground in front of the building is dark and appears to be a paved area. The overall atmosphere is modern and minimalist.

PURE ENVY



CAPTIVATING DETAILS

Reinforcing its ambitious stance, the interior delivers on sophistication with distinctive **Alcantara** detail and **Carbon Fibre** visual accents. Cue the envy.



Integrated design

Everything you need to know, right in front of you on the crystal-clear **Digital Instrument Panel**, accompanied by built-in **LED Dash Lighting**.



Let the Sunshine in

Allow the Haval H6 **GT**'s, expansive **Panoramic Sunroof**, to flood the cabin with natural light.



Effortless journeys - the convenience of smart technology

SMART TECHNOLOGY

Experience pure intelligence on the road.
Reimagine what can be achieved with the touch of
a button. Pure driving convenience and pleasure.



Seamless Flow of Information

The ultimate in driving connectivity with a **12.3 inch Full-colour Touchscreen**, **Apple Carplay®** & **Android Auto** and an **8-Speaker Sound System**.



Effortless Convenience

Made for effortless journeys, the cutting-edge **Wireless Charger** and **Intelligent Voice Command Technology** provide the convenience of true efficiency.



Driving Modes

Dynamic Steering in the Haval H6 GT offers a range of choices to suit your driving preferences. Navigate the roads using Standard, Eco, Sports, Snow, Sand, Off-road or Race mode.





Adaptive Cruise Control,
Intelligent Cruise Assistance,
Traffic Jam Assistance



Automatic Emergency Braking
detects obstructions, reacting
instantly to avoid collisions.



The Door Open Warning system
helps prevent accidents while
parked, by monitoring hazards
around the vehicle.



The Haval H6 **GT** also features
intelligent dodge with **Smart
Collision Avoidance System** –
keeping your safety a top priority.



Your field of vision in the H6 **GT**
broadens with a **360° Camera**
– 4 Wide-Angle lenses: on the
front, back and sides of the SUV,
eliminating blind spots, warning of
imminent collisions and keeping
your safety a top priority.



The **Traffic Sign Recognition**
system in the Haval H6 **GT**
identifies and communicates
traffic sign information, keeping
you informed and safe.



With **Rear Collision Warning**,
alerts are triggered to avoid
rear-end collisions.



Lane Keep Assist in the Haval
H6 **GT** ensures safer driving by
alerting you, and gently steering
you back into your lane, if you
drift unintentionally.



The Haval H6 **GT**'s **Head-Up
Display** keeps essential info
in your line of sight, enhancing
focus, convenience, and
driving safety.

ADVANCED SAFETY




Warranty like no other

WARRANTY: 7 Years / 200 000 km

SERVICE PLAN: 7 Years / 75 000 km with
service intervals of 12 Months or 15 000 km

ROADSIDE ASSISTANCE: 7 Years / Unlimited km

 **connectiveCARE**
connected to, and caring for you



MODEL	HAVAL H6 GT
ENGINE	2.0 TURBO
POWER (kW)	155 / 6 000 - 6 300
TORQUE (NM)	325 / 1 500 - 4 000
DIMENSIONS (LENGTH X WIDTH X HEIGHT) mm	4 653 X 1 886 X 1 730
TRANSMISSION	7DCT
DRIVETRAIN	4WD
GRADE	Super Luxury

STEERING AND DRIVING DYNAMICS	
Electronic Parking Brake (EPB)	●
Auto Hold	●
Smart Start-Stop	●
Tilt & Telescopic Steering	●
Front McPherson & Rear Multi-Link Suspension	●
Driving & Terrain Modes (Standard, Eco, Sports, Snow Sand, Off-Road, Race*)	●
Speed Sensitive Electric Steering	●
EXTERIOR	
Aerodynamic Kit: Dual Rear Spoilers, Aero Side Skirts & Sporty Rear Diffuser	●
Front Bumper & Rear Tailgate: Gloss Black with Carbon Fibre Visual Accent	●
Matte Black Overfenders	●
Gloss Black Exterior Mirrors	●
Gloss Black Roof Rails	●
235/55 R19 Sporty Alloy Wheels with Gloss Black Finish	●
Auto Lift Tailgate	●
Panoramic Sunroof	●
Rain-Sensing Wipers	●
INTERIOR	
Wireless Charger	●
Synthetic Leather Steering Wheel	●

Notes: *Ts & Cs apply. The information herein is provided as a guide only. Specification is subject to change at any time. Please contact your nearest dealer to confirm current specification. Vehicle/s shown may differ. Date of publication - November 2024. E&OE.

Keyless Entry & Push Button Start	●
Heated Front Seats	●
Vanity Mirrors (Driver and Passenger)	●
Paddle Shift	●
Front 12V Power Outlet	●
Rear Luggage 12V Power Outlet	●
Dashcam Power Outlet	●
10.25" Colour Combination Instrument	●
6-Way Electric Adjustable Driver Seat	●
4-Way Electric Adjustable Passenger Seat	●
2-Way Electric Adjustable Driver Lumbar Support	●
60:40 Split with Folding Rear Seats	●
Sports Front & Rear Seats	●
Sports Interior: Alcantara Inserts & Carbon Fibre Visual Accents	●

SAFETY AND SECURITY

6 Airbags: Dual, Side & Curtain Airbags	●
Child Safety Lock & ISOFIX	●
Electronic Stability System (ESC) & Traction Control (TCS)	●
Anti-Roll System (RMI) & Secondary Collision Mitigation (SCM)	●
Cornering Brake Control (CBC) & Brake Assist (BA)	●
Hill Descent (HDC) & Uphill Assist (HHC)	●
Tyre Pressure Monitoring System (TPMS)	●
Front Parking Sensors	●
Rear Parking Sensors	●
360° Camera with Panoramic View	●
Adaptive Cruise Control (ACC) with Intelligent Cruise, Intelligent Cornering & Traffic Jam Assist	●
Pre-Collision Warning & Automatic Emergency Braking (AEB Pedestrian & Cyclist)	●
Lane Departure Alert (LDW), Lane Keeping Assist (LKA) & Lane Centre Keeping (LCK)	●
Traffic Sign Recognition (TSR)	●
Blind-Spot Detection with Rear Cross Traffic Alert & Lane Change Assist	●
Head-Up Display	●

Driver Fatigue Alert	●
Anti-Theft Alarm System	●
INFOTAINMENT	
Radio with FM/AM	●
12.3" Colour Multi-Touch Screen	●
Voice Command	●
Front & Rear Dual USB Ports	●
Bluetooth Connectivity	●
8 Speakers: 4 Treble & 4 Bass	●
Speed Sensitive Volume Control	●
Carplay® & Android Auto™	●
GLASS AND MIRROR	
Electronic Anti-Glare Inside Mirror	●
All Windows One-Touch (up/down)	●
Heated Exterior Mirror	●
Electrically Adjustable Exterior Mirror	●
Electrically Retractable Exterior Mirror	●
LIGHTING	
LED Headlights & Tail Lights	●
Electric Height-Adjusting Headlights	●
Automatic Headlights with Follow-Me-Home Function Front Fog Lamp (LED)	●
Front Fog Lamp (LED)	●
Rear Fog Lamp (LED)	●
Daytime Running Lights (LED Integrated)	●
AIR CONDITIONER	
Automatic Dual Zone Air Conditioner	●
Rear Air Conditioner Vents	●
WARRANTY	
Warranty – 7 Years / 200 000 km	●
Roadside Assistance – 7 Years / Unlimited km	●
Service Plan – 7 Years / 75 000 km	●
Service Intervals – 12 Months / 15 000 km	●

Notes: *Ts & Cs apply. The information herein is provided as a guide only. Specification is subject to change at any time. Please contact your nearest dealer to confirm current specification. Vehicle/s shown may differ. Date of publication - November 2024. E&OE.

ULTRA STYLISH AND FUNCTIONAL



1886 mm

1730 mm

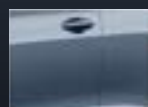


20°

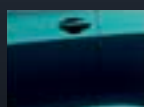
27°

2738 mm

4653 mm



KU Grey



Atlantis Blue



G7 Red



Hamilton White



Sun Black



www.zimoco.co.zw